

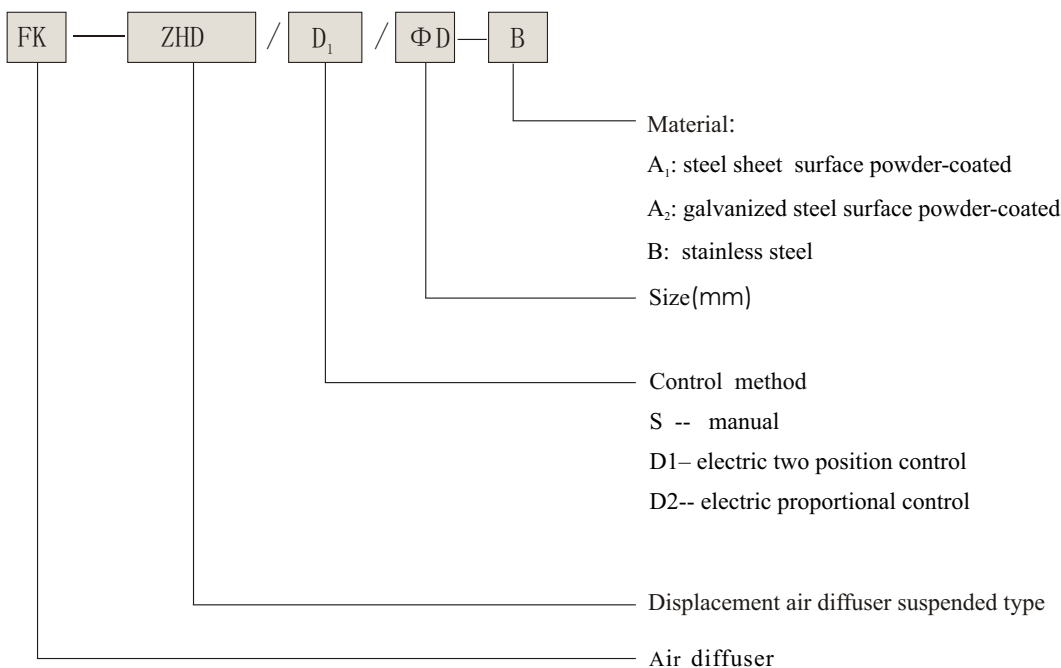
## 1, General description

FK-ZHD series displacement air diffuser is one of our new series products. It can be widely used for air adjusting system in large rooms, e.g. airport, waiting room, gymnasium, assembly factory, shopping center etc.

When FK-ZHD series displacement air diffuser supply air, the supply air spreads out over the floor and it is conveyed upwards by the convection currents from the people or heat sources. This kind of air supply must find the heating source need to be removed from thermal load. On process of air supply, not only can remove the thermal and humidity load, but also can remove the air contamination.

FK-ZHD can change the direction of air stream according to the cold and warm air, the direction of air stream are controlled by both of butterfly valve on the bottom and inner spraying valve. There are three control ways which are manual, electric two position control, electric proportional control.

## 2. Symbol Explanation



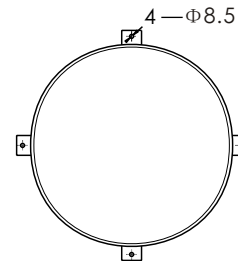
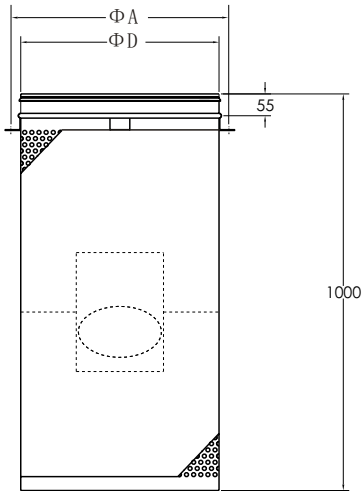
## 3, Characteristic

Displacement air diffuser  
suspended type



- 250,300,315,350,400,500 to available;
- Large spread area of air flow which is steady and low noise;
- Easy to installation, simple configuration with steady capacity;
- Available rubber sealed connection which is credible and easy;

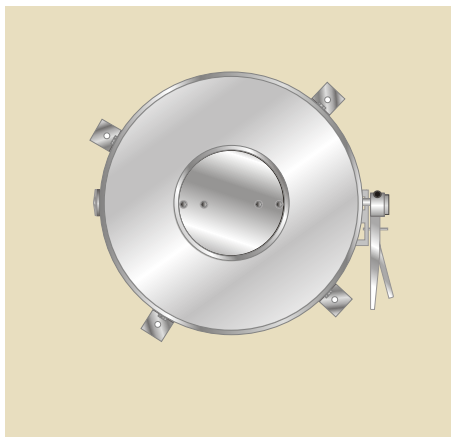
#### 4. Specification



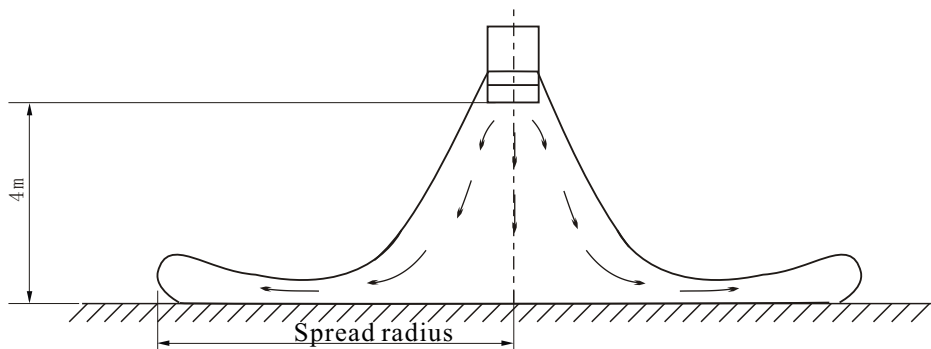
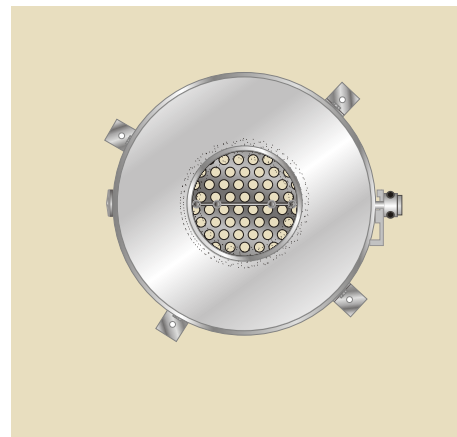
Item \ Size	Φ250	Φ300	Φ315	Φ350	Φ400	Φ450	Φ500
ΦA	273	323	338	373	423	473	523
ΦD	248	298	313	348	398	448	498

#### 5. Two types of air

Cold air supply



Warm air supply



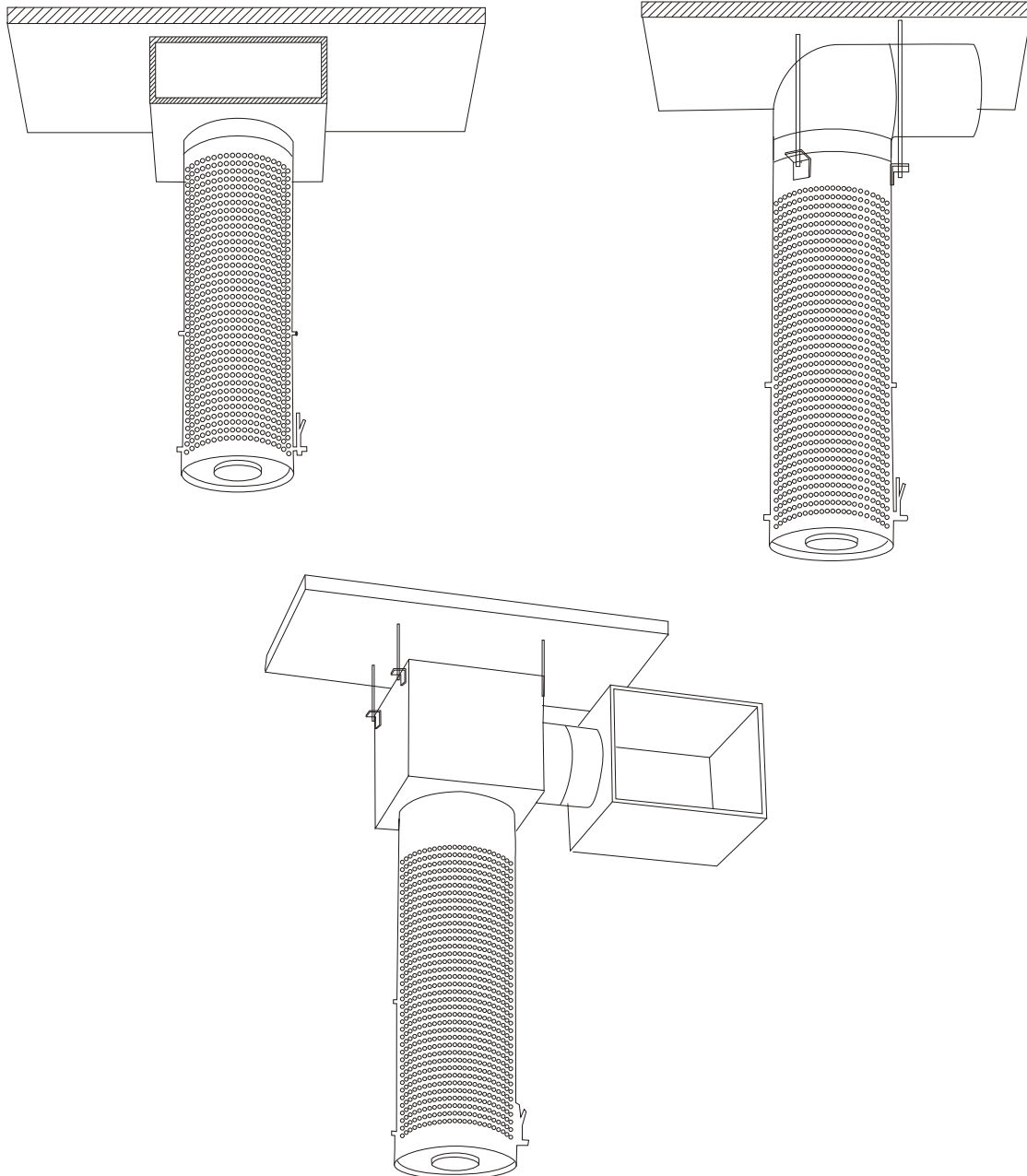
## 6. Technical Parameter

Technical Parameters Size	Air volume m <sup>3</sup> /h	Pressure lost Pa	Spread radius m	Noise dB (A)	Weight Kg
Φ250	1550	37	4.1	32	8.5
	1680	42	4.4	33	
	1820	44	4.9	34	
	1950	46	5.3	35	
	2050	49	5.7	36	
	2150	51	6.1	38	
	2340	54	6.4	40	
	2450	57	6.8	41	
Φ300	2250	39	4.7	33.4	9.7
	2420	42	5.3	36.4	
	2580	46	5.8	39	
	2760	50	6.4	41	
	2950	52	6.7	42.4	
	3150	55	7.0	44	
	3350	59	7.3	45.5	
Φ315	2250	36	4.8	34	10.5
	2420	40	5.4	37	
	2580	45	5.9	40	
	2760	47	6.5	42	
	2950	49	6.8	43	
	3150	51	7.1	45	
	3350	54	7.4	46.5	
Φ350	2750	37	4.9	37	11.5
	2900	42	5.5	40	
	3200	45	5.9	42	
	3300	47	6.6	44	
	3450	49	6.8	46	
	3550	54	7.2	47	
	3950	58	7.5	49	

Technical Parameter Size	Air volume m <sup>3</sup> /h	Pressure loss Pa	Spread Dia. m	Noise dB (A)	Weight Kg
Φ400	3500	40	5.0	38	13.5
	3850	43	5.6	41	
	4100	46	6.1	43	
	4250	48	6.8	45	
	4500	51	7.4	47	
	4750	54	7.6	48	
	5000	65	7.9	50	
Φ450	4500	42	5.2	39	15
	4900	46	5.8	42	
	5200	48	6.4	44	
	5400	54	6.8	46	
	5650	65	7.2	48	
	6000	73	7.6	49	
	6500	81	8.0	51	
Φ500	5600	48	5.4	45	16.5
	6000	54	6.0	46	
	6400	65	6.4	48	
	6700	73	6.9	49	
	7000	80	7.4	51	
	7300	85	7.9	52	
	8000	106	8.5	54	

Note: Value of Spread radius we test on the following three conditions ,distance from air diffuser to the floor is 4m , temperature difference between supply air and indoor room is 8℃,end air velocity is 0.25m/s

## 7. Installation



## 8. Order details

- 1). The technical parameters listed in are reckoned in special working conditions (temperature difference between supply air and indoor room is  $8^{\circ}\text{C}$ , context noise is less than  $10\text{db(A)}$ ). We test at the condition which is distance from air diffuser to the floor is 4m). When use condition is different from the testing condition, the technical parameters in the samples may have a little windage.
- 2). When making orders, you should give the exclusive decision confirmation according to the samples' examples of method.
- 3). Our company retains the rights of interpretation and revision of this sample.