

1, General description

Light diffuser with perfect appearance and nice ventilation which used in the location which need enough illumination, nice ventilation and high quality air ,such as modern building ,hotel, emporium, office ,railway station , dock , airdrome and so on .

2, Characteristic

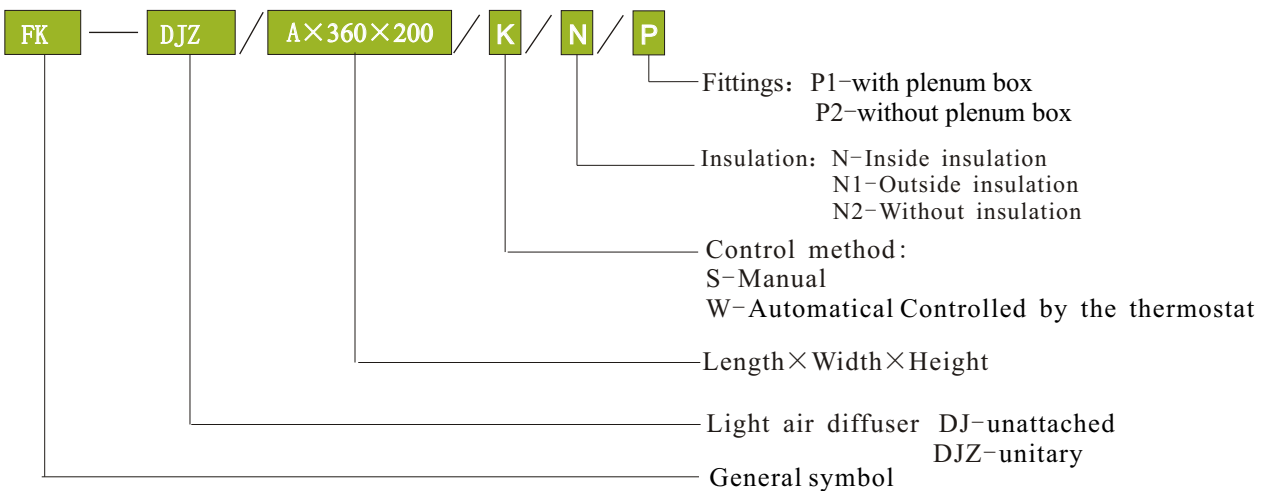
Light air diffuser

FK-DJZ



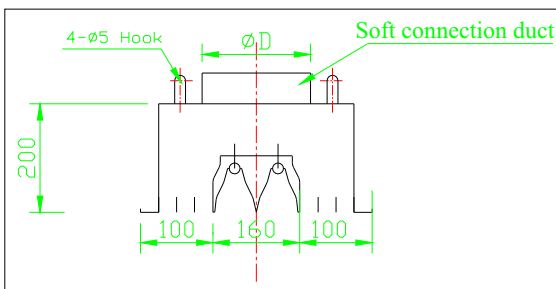
- (1). This series diffuser can used with light , we can make the diffuser and light integrative.
- (2). There is adjustable vanes on the air exit ,through adjusting vanes we can change the air direction of the supply air .
- (3). We can add Temperature Control Actuator to actualize controlling automatically which means no need to adjust manual ,it can adjust the direction of supply air automatically.
- (4). You can choose inside or outside heat preservation and we prefer to use inside heat preservation method.
- (5). Our clients supply the appropriate light in general , we also can supply the light according the design requirements or written confirmation by decorative designer .
- (6). We can satisfied with various requirements according different lights our clients use.

3, General symbol

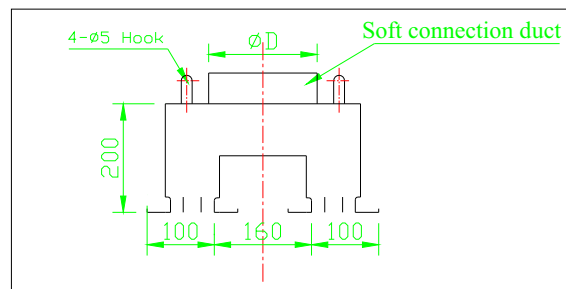


For example: FK-DJZ2-1200*360*200-W-N means unitary light diffuser whose length of the diffuser is 1200mm, Automatical Controlled by the thermostat with inside insulation.

4, Technical data and size



Unitary



Unattached

Spec.	L (mm)	connection air duct D (mm)			Note
		I	II	III	
FK-DJZ1 FK-DJ1	600	Φ200	Φ250	Φ300	The connection duct quantity is one which in the middle
FK-DJZ2 FK-DJ2	1200	Φ200	Φ250	Φ300	The connection duct quantity is one which in the middle

Note:

- (1) Please make out specially if you need plenum box
- (2) We use general lamp as the above table. If you need to use other lights, we can have a change about the length, width and height in the above table .
- (3) When the exit air velocity $V \leq 2\text{m/s}$, choose I type connection duct. When the exit air velocity $2\text{m/s} < V \leq 4\text{m/s}$, choose II type connection duct. When the exit air velocity $4\text{m/s} < V \leq 6\text{m/s}$, choose III type connection duct.

Main technical data

Spec.	Outlet air velocity(m/s)	Air volume(m ³ /h)	Static Pressure Lost(Pa)	Throw Distance(m)	Second Noise dB(A)
FK-DJZ1 FK-DJ1	1	130	3.2	1.2	<20
	2	260	6.1	1.8	<20
	3	388	9.2	2.6	24
	4	518	14	3.7	24
	5	648	23	4.6	29
	6	776	31	5.6	31
FK-DJ2 FK-DJ2	1	260	4	1.32	<20
	2	520	7.9	1.98	<20
	3	776	12	2.86	25
	4	1036	18	4.07	28
	5	1296	29	5.06	30
	6	1552	42	6.16	32

Note:

- (1). The data we inspected in the above table according to isothermal airflow
- (2). The end air flow is 0.25m/s ,as the throw distance in the above table .

5, Order Known

- (1)The technical parameters listed in this samples are reckoned in special working conditions. The testing conditions are that: single unit isothermal free air flow, supply air difference in temperature is 8°C , when use condition is different from the testing condition, the technical parameters in the samples may have a little windage.
- (2) When making orders, you should give the exclusive decision confirmation according to the samples' examples of method.
- (3) Our company retains the rights of interpretation and revision of this sample.