

1. General

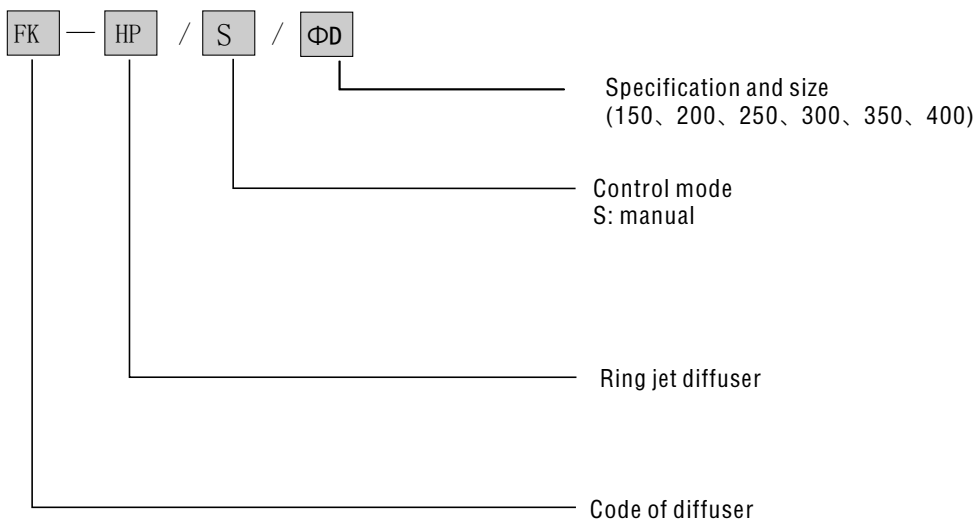
The ring spout FK-HP is mainly used in the area where the a/c outlets are far away from the people moving around.

For example, in the big public open space, it is not proper to use ceiling outlets, because they are not able to supply air uniformly to the corners and it is better to install ball spouts to supply side air. On the condition that air supply and the indoor temperature are changing, the supply airflow will be up (cold air) and down (hot air).

Our ring jet diffuser is quite good at the noise control because the theory of the air dynamics is adopted in its structure design. Furthermore due to its unique excellent appearance, it can be used in the superior places such as concert, airport, theatre, museum etc.

The air supply direction can be manually adjusted on the spot and it can also be electrically adjusted within ±45 degree.

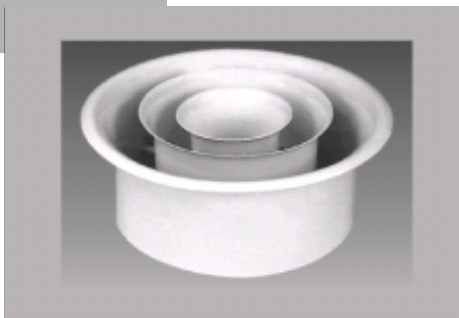
2. Symbol Explanation



For example: FK-HP/S/150 stands for 150mm diameter manually adjusted ring jet diffuser

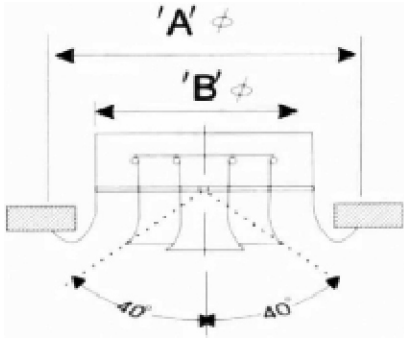
3. Characteristic

Ring Spout



- (1) Excellent Throw
- (2) Adjustable Air Flow
- (3) Durable
- (4) Our color is standard white however for large runs we are prepared to use other colors but there may be a cost penalty.
- (5) Materials: Aluminum

4.Dimension



Model	Size	
	Outer Frame A dia	Neck B dia
FK-HP/S/Φ150	230mm dia	150mm dia
FK-HP/S/Φ200	280mm dia	200mm dia
FK-HP/S/Φ250	330mm dia	250mm dia
FK-HP/S/Φ300	380mm dia	300mm dia
FK-HP/S/Φ350	430mm dia	350mm dia
FK-HP/S/Φ400	480mm dia	400mm dia

5. Parameter of Performance

Neck Size	Velocity(m/s)	2	3	4	5	6	7	8	10
150	Volume(l/s)	36	54	72	90	110	127	145	181
	Throw(m)	2.6	4	5.5	5.8	8.2	9.6	11	15.2
	NC	-	26	30	36	43	49	53	56
200	Volume(l/s)	64	97	129	161	194	226	259	314
	Throw(m)	3.8	5.6	7.4	9.2	11	13	14.7	20.5
	NC	-	26	30	36	43	49	53	56
250	Volume(l/s)	101	152	202	253	304	355	405	506
	Throw(m)	4.6	7	9.5	11.6	13.8	16.2	18.5	25.4
	NC	-	24	28	33	38	42	46	50
300	Volume(l/s)	146	219	292	365	436	511	584	737
	Throw(m)	5.6	8.4	11.2	14	16.8	19.5	22.2	31
	NC	-	24	29	33	38	42	46	50
350	Volume(l/s)	195	294	336	433	489	629	700	840
	Throw(m)	6.5	9.6	13	15.3	18.5	20.6	23.6	28.5
	NC	-	25	30	34	40	43	47	51
400	Volume(l/s)	227	320	391	489	587	685	783	979
	Throw(m)	6.8	9.9	13	16.3	19.5	22.6	25.6	30.5
	NC	28	30	32	34	40	43	47	51